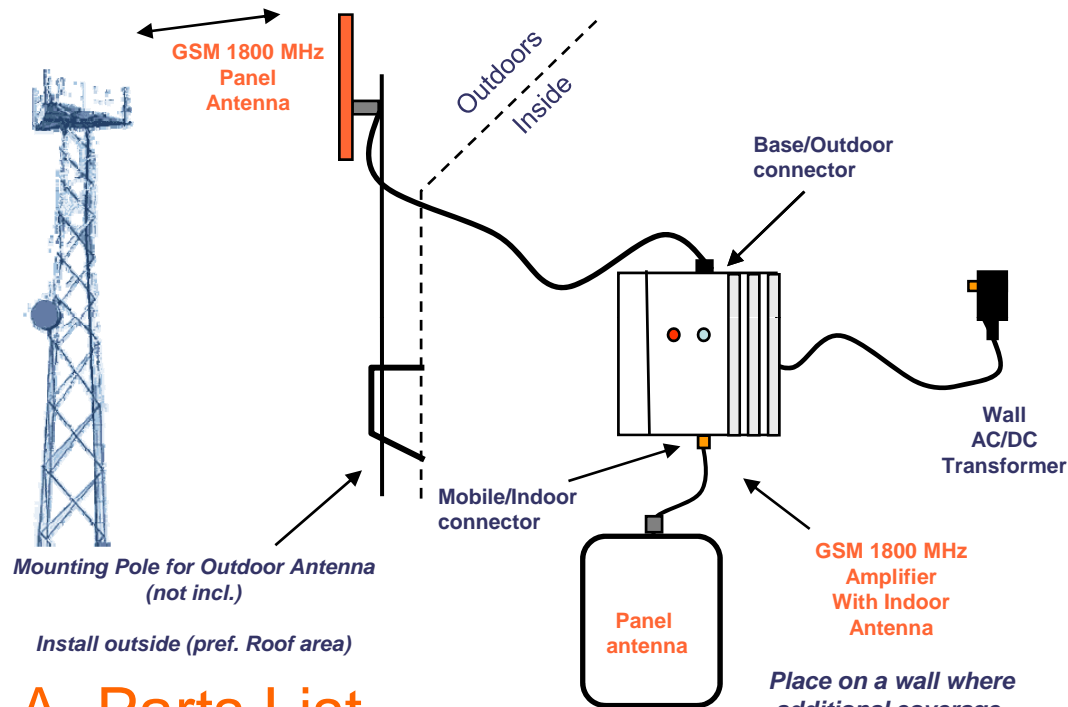




CAE50 GSM 1800 SOHO Repeater System



Mounting Pole for Outdoor Antenna (not incl.)

Install outside (pref. Roof area)

A. Parts List

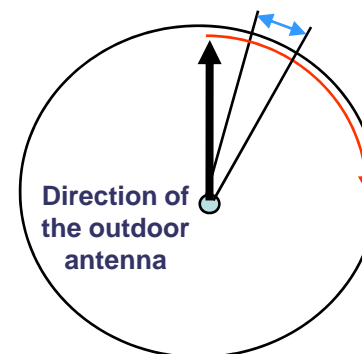
- 50 dB 1800MHz Amplifier with wall pack DC power supply
- GSM 1800 MHz High gain external antenna
- 10 meters of low loss cable complete with connectors already attached. One end is an N Male connector to connect to the external panel antenna and the other end is an SMA Male connector for the amplifier
- CA-Whip
- Indoor panel antenna

Place on a wall where additional coverage is desired

B. Instructions

- 1) Place the external panel antenna outside – preferably on rooftop (see instructions on the box)
- 2) Run the 10 meters of cable from the outdoor panel antenna to the amplifier (Connect outside antenna cable connector to **Base** side & attach indoor whip or panel antenna to **Mobile** side).
- 3) Place the amplifier indoors where coverage is required.
- 4) Power up the amplifier by connecting the wall mounted transformer in wall outlet and the other end to the DC-IN connector.
- 5) In order to get the best performance of this system you will need to get the outside panel antenna aimed at the cell site of your GSM provider (may not necessarily be the closest to you – or even visible).

See illustration below for detailed antenna aiming instructions



Move in 1 inch increments (wait 20-30 seconds) and see how the signal improves inside – stand about 6 feet away from indoor antenna. If there is no improvement, move it another inch in rotation (wait another 20-30 seconds) before moving again if needed.

Once maximum signal is obtained then tighten mounting nuts on panel antenna and you are done.